

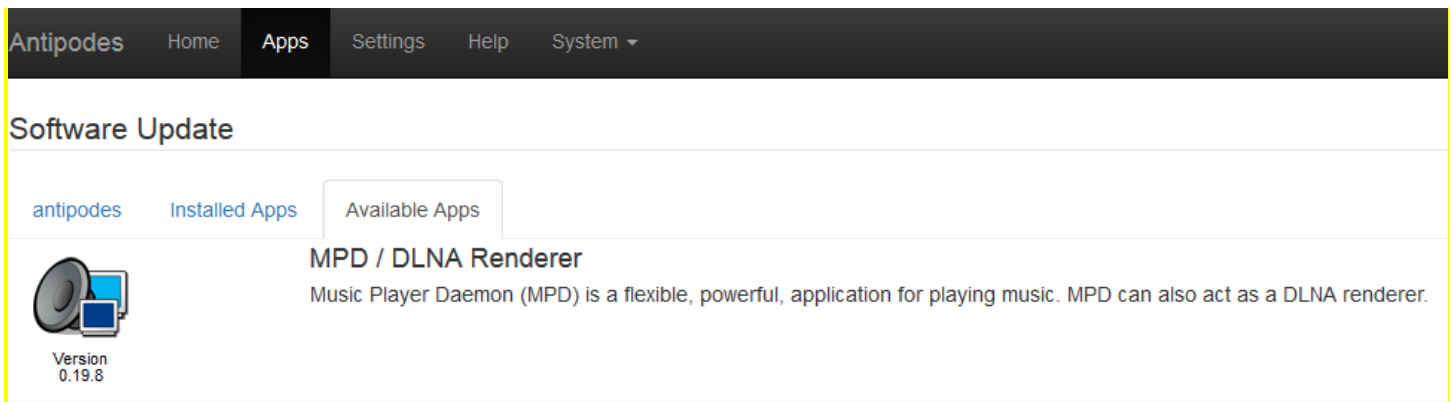
MPD/DLNA (Renderer)

Music Player Daemon (MPD) is an open source music player/server that can optionally be installed on the Antipodes server. It plays audio files, organizes playlists and maintains a music database. In order to interact with it, a separate client application, running on a Windows or Apple PC, iPad, iPhone or Android device, is needed.

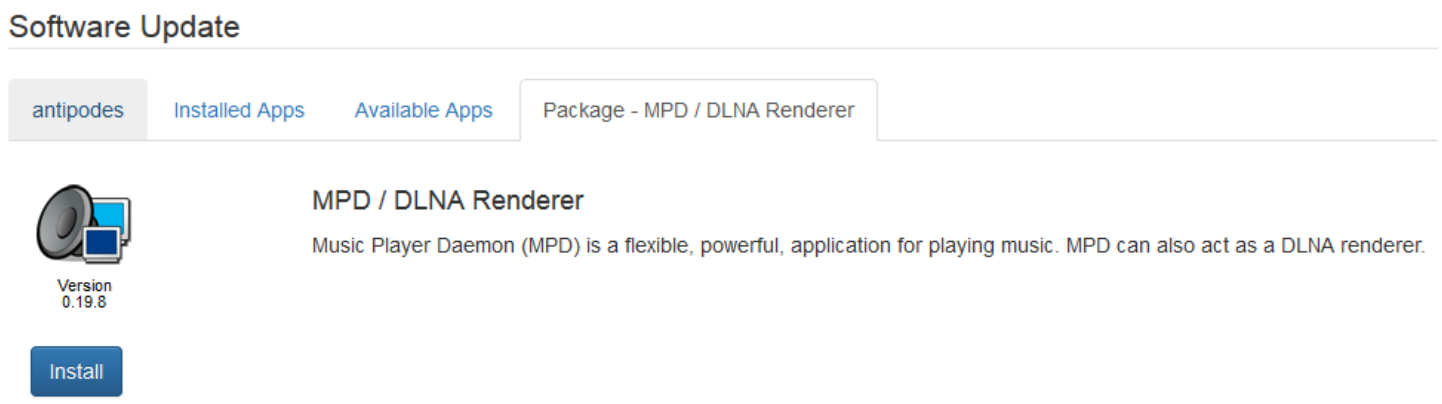
Note: the MPD player can also function as a DLNA Renderer, hence the name MPD/DLNA Renderer. This functionality is described in the Minim Server and BubbleUPnP Server Help sections.

How to Install MPD

MPD is an optional application on the Antipodes server. To install it go to the **'Apps'** tab on the Antipodes GUI screen and then click the **'Available Apps'** tab:



Click on the **'MPD/DLNA Renderer'** icon and then **'Install'** on the following screen to commence the installation:



When the installation has completed return to the **'Apps'** tab and you will see it displayed:

Apps



Audio App Switcher



MPD / DLNA Renderer



CD Import



System Status



Software Manager

How to set up MPD

MPD communicates with your DAC via USB or SPDIF connections or directly with your preamp/amplifiers via the Analog Out connections. You must allocate a 'Player' name to the audio device that you will use to play music.

On the Antipodes GUI screen go to '**Settings**' and then click the '**MPD/DLNA Renderer**' tab. You can enter a meaningful name alongside '**Player Name**' if you like. Select the appropriate output device (USB, SPDIF, Analog) from the '**Audio Device**' drop-down list. Then click '**Save Changes**':

MPD / DLNA Renderer Settings

Player Name

Player name (leave blank for auto)

Audio Device

Select the audio device for this player

Enable Direct DSD support

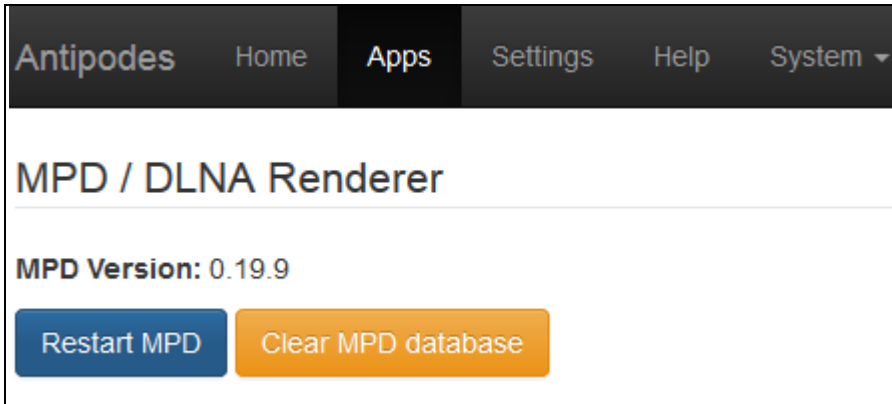
This will enable Direct DSD to your DAC instead of DoP. Your DAC must support Direct DSD to use this feature.

Save changes

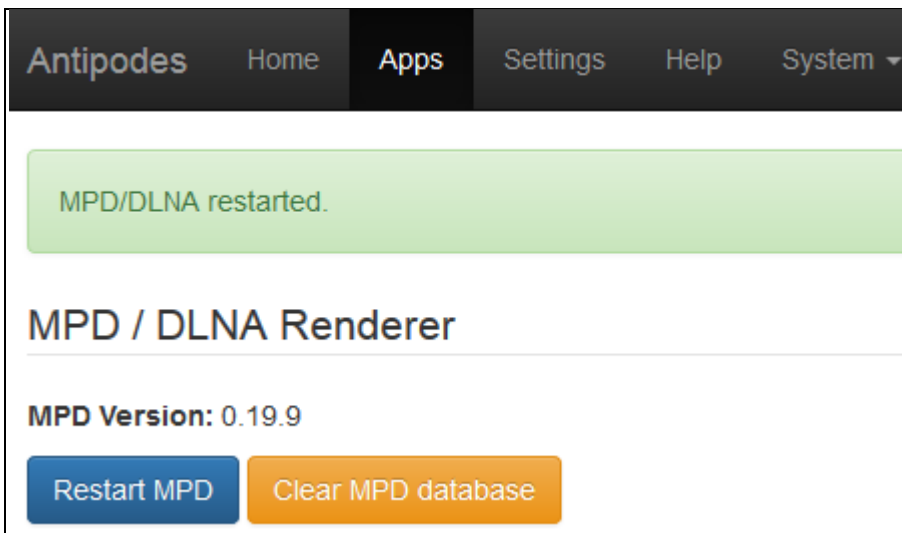
Cancel

How to run MPD

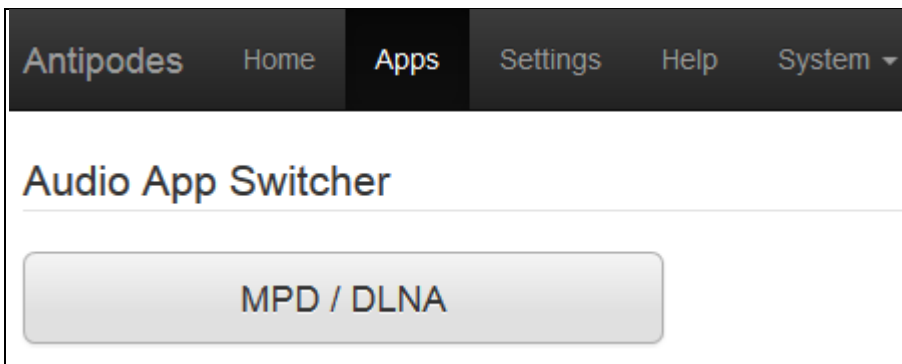
Go to the 'Apps' tab, click on the 'MPD/DLNA Renderer' tab, and then click the 'Restart MPD' button:



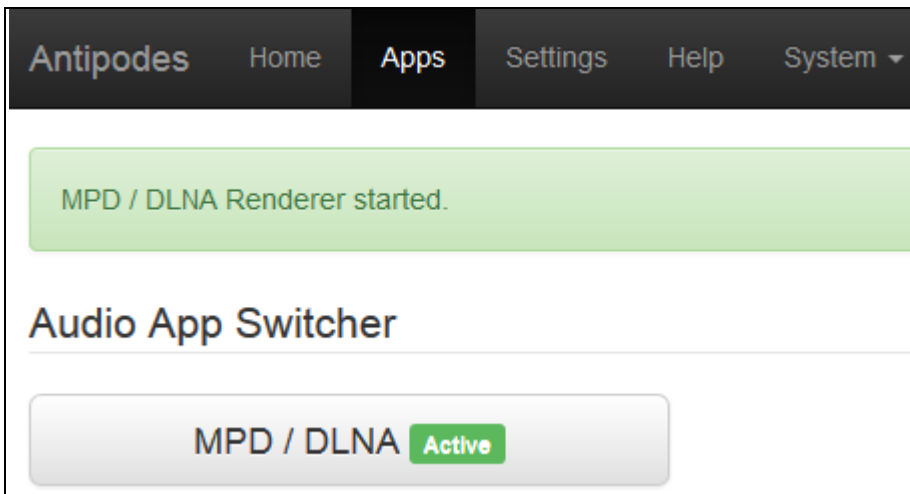
The 'MPD/DLNA restarted' message confirms that the MPD server is now running.



Then go to 'Apps' and click on 'Audio App Switcher':



Click the '**MPD/DLNA**' button to start the MPD/DLNA Renderer audio player:



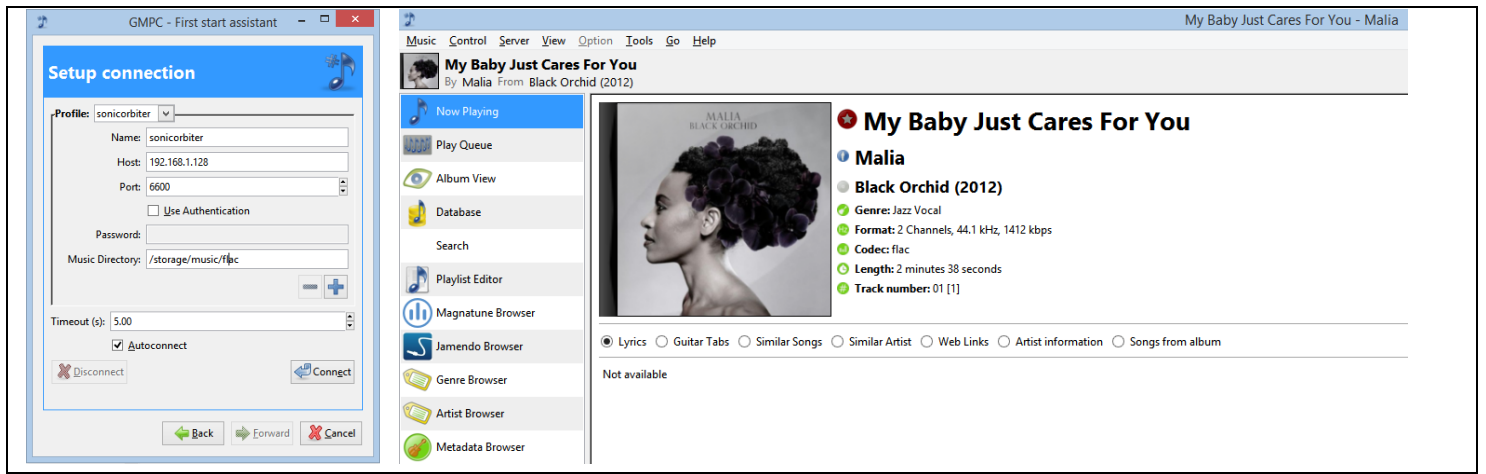
The '**MPD/DLNA Renderer started**' message confirms that the MPD Player/DLNA Renderer is now running.

How to manage MPD

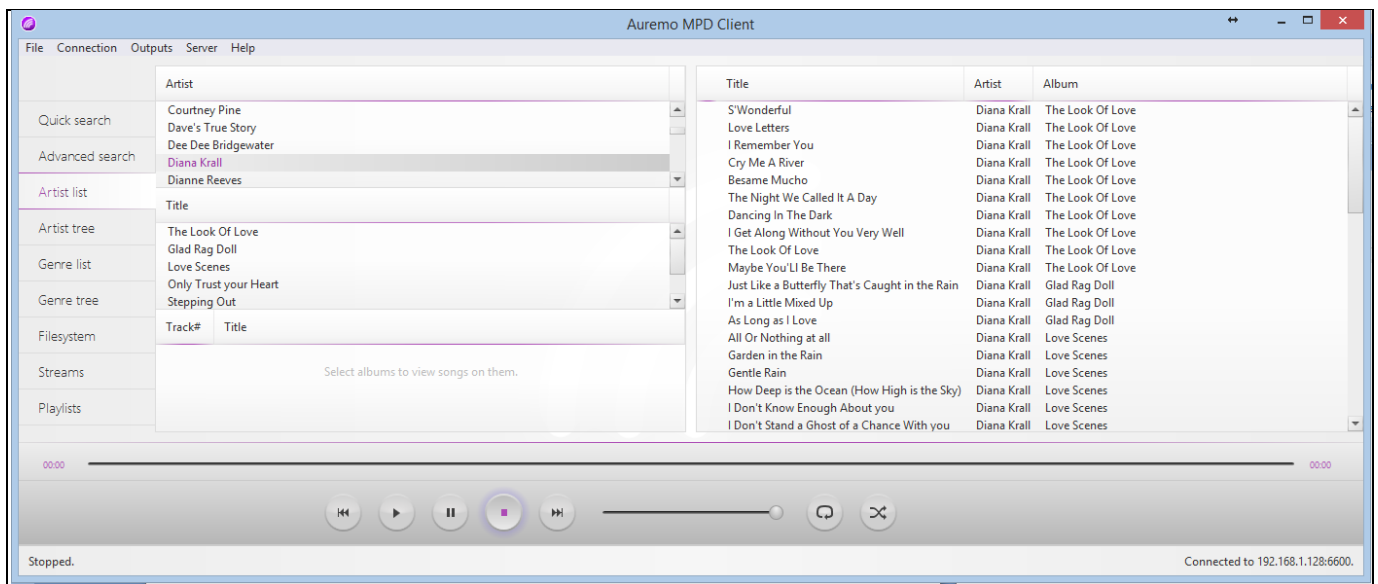
You must install a remote controller client application to manage playback via MPD on the Antipodes server. Client applications are available for Windows or Apple (OSX) computers, iPod, iPad, and Android smartphones and tablet devices. The following client applications are examples:

1. **GMPC** (Windows): download from www.gmpclient.org

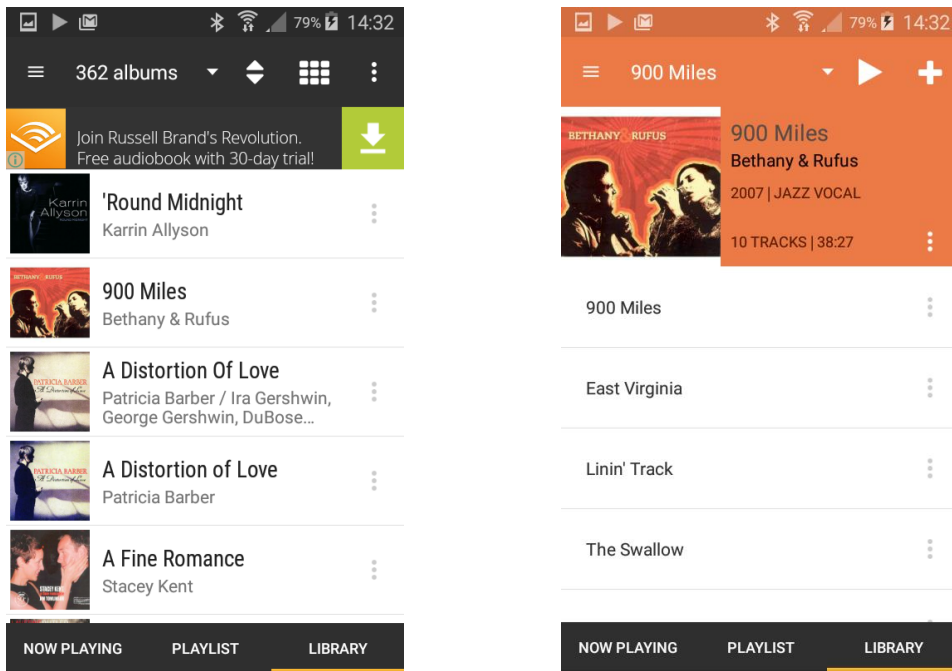




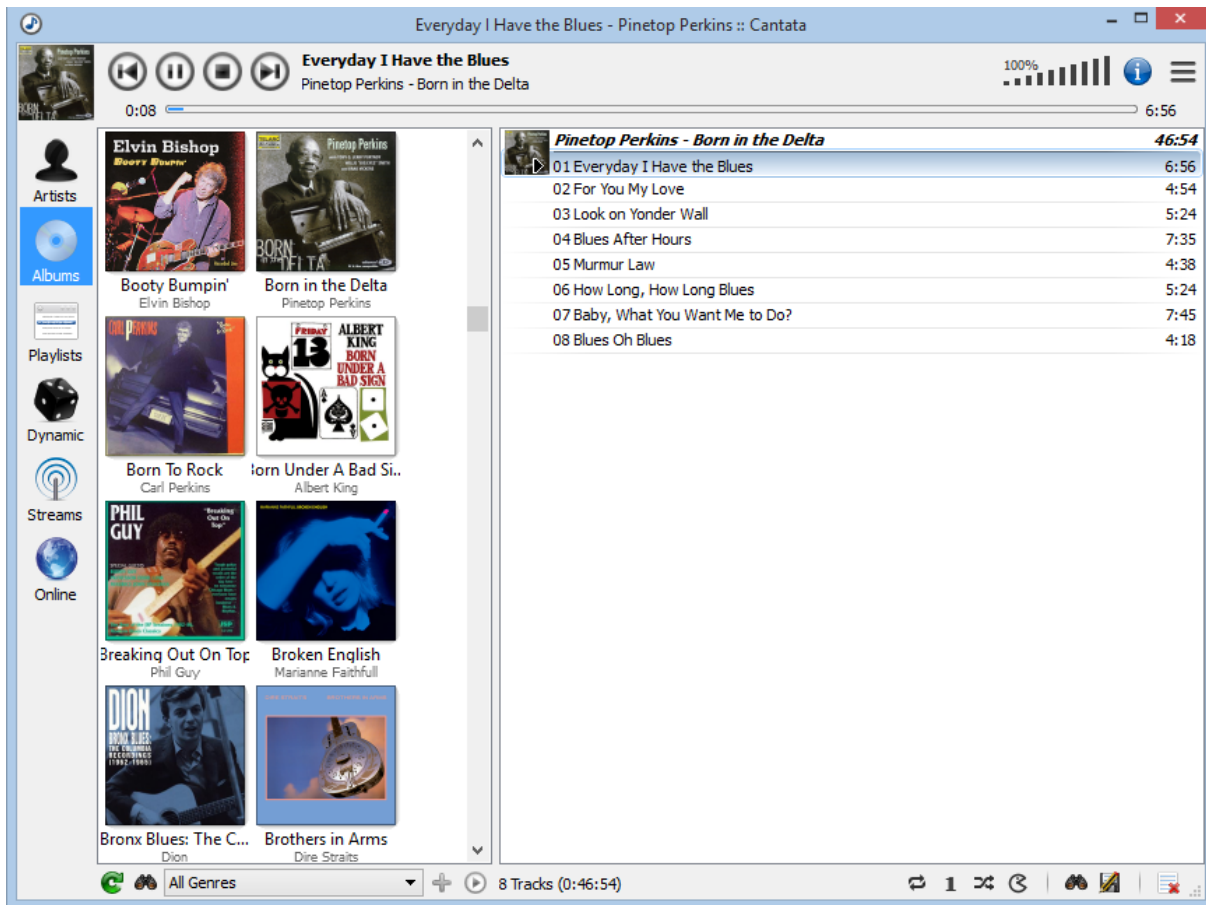
2. Auremo (Windows): download from <https://auremo.codeplex.com/>



3. MPDroid (Android): download from Google Play



4. Cantata (Windows): download from <http://en.freownloadmanager.org/Windows-PC/Cantata-FREE.html>



Note: MPoD (iPod, iPad) is no longer available.