

7.5 HQPlayer NAA

Signalyst HQPlayer is an upsampling multichannel audio player for Windows, Linux and OS X. A light version can be optionally installed on the Antipodes server and then controlled by a copy of HQPlayer Desktop running on a PC or Mac. HQPlayer provides high levels of digital manipulation on the files, including room correction, digital volume, different digital filters, up-sampling, trans-coding etc.

HQPlayer NAA is not installed on your Antipodes server by default, so you will need to install it at the Antipodes GUI first. Go to Section 8 for a guide to

installing and uninstalling apps in the Antipodes GUI.

HQPlayer NAA is only a renderer application so you need to also install the HQPlayer main application on a desktop computer. Go to:

<http://www.signalyst.com/consumer.html>

and download and install the appropriate version of HQPlayer Desktop. HQPlayer Desktop requires a licence to be purchased. You can use the product for 30 days at no charge for evaluation.

HQPlayer Desktop: 3.11.0

[Download for Windows](#) trial / update.

[Download 64-bit for Ubuntu 14.04](#) trial / update.
Kernel and libasound2 packages for native DSD support [here](#).

[Download for Mac OS X](#) trial / update.

How to Run HQPlayer

To get the best performance from HQPlayer we recommend that your Antipodes server and PC or Mac are both Ethernet cable-connected to your network router. This however is not mandatory and you may find it works satisfactorily with wireless PC connection.

Once HQPlayer NAA is installed on your Antipodes there is no more to do in the Antipodes GUI than select HQPlayer NAA at the 'Audio App Switcher' (see section 4.4 of this guide).

But you need to complete the necessary setup in the HQPlayer desktop application - see the next pages for a guide to doing this.

HQPlayer NAA started.

Audio App Switcher

[Squeezelite](#)

[HQPlayer NAA Active](#)

This part of the guide refers to a third-party application that is not included with your Antipodes server, but we include it as a way to get started quickly with this application. For detailed and up to date information, you should visit:

Website: <http://www.signalyst.com/>

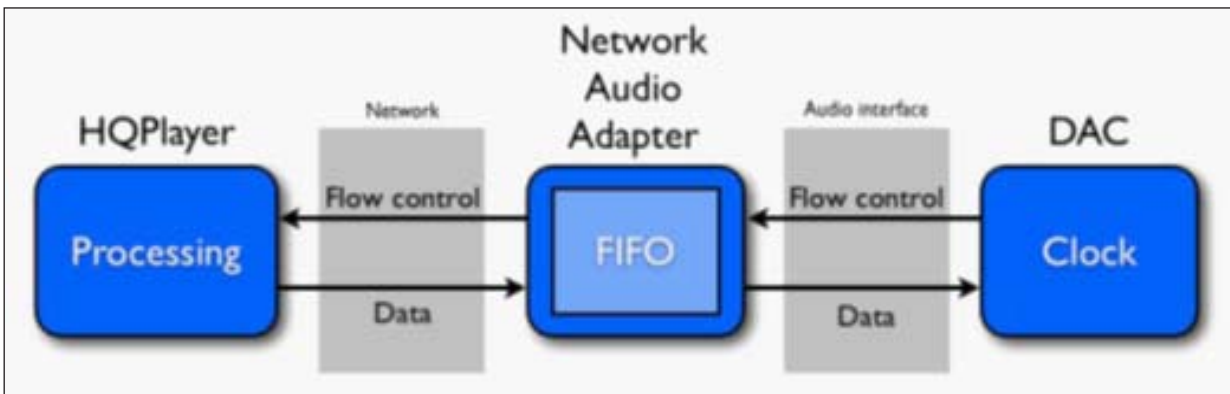
The HQPlayer Desktop User Guide can be found at: i-cat.biz/pdf/HQPlayer-manual.pdf

There is a very active HQPlayer community forum at:

<http://www.computeraudiophile.com/f11-software/hq-player-20293/>.

Run HQPlayer on Windows or Mac

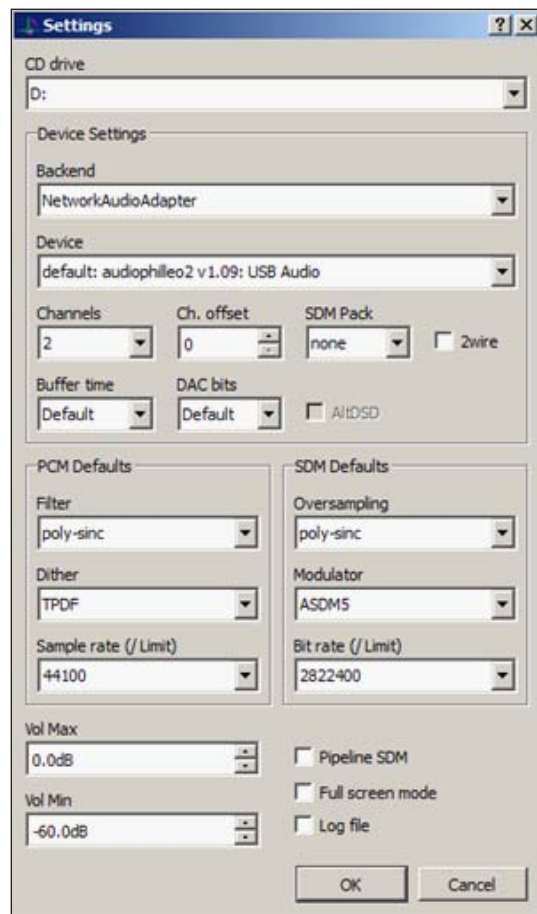
The audio processing is performed at the HQPlayer Desktop application side, and then streamed asynchronously over the network for reproduction on your Antipodes. In the diagram below the Antipodes is the Network Audio Adaptor.



How To Set Up HQPlayer on Windows or Mac

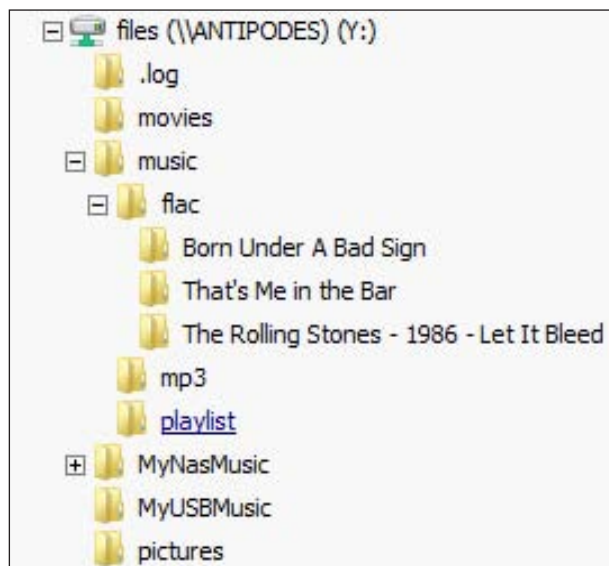
Start HQPlayer NAA on your Antipodes server and then start the HQPlayer Desktop application on your PC or Mac. Click 'File/Settings'.

Under 'Backend' select 'NetworkAudioAdapter'. Under 'Device' select the entry that matches the name of you DAC or USB adapter ('audiophile2' in the above example). Then click 'OK'.

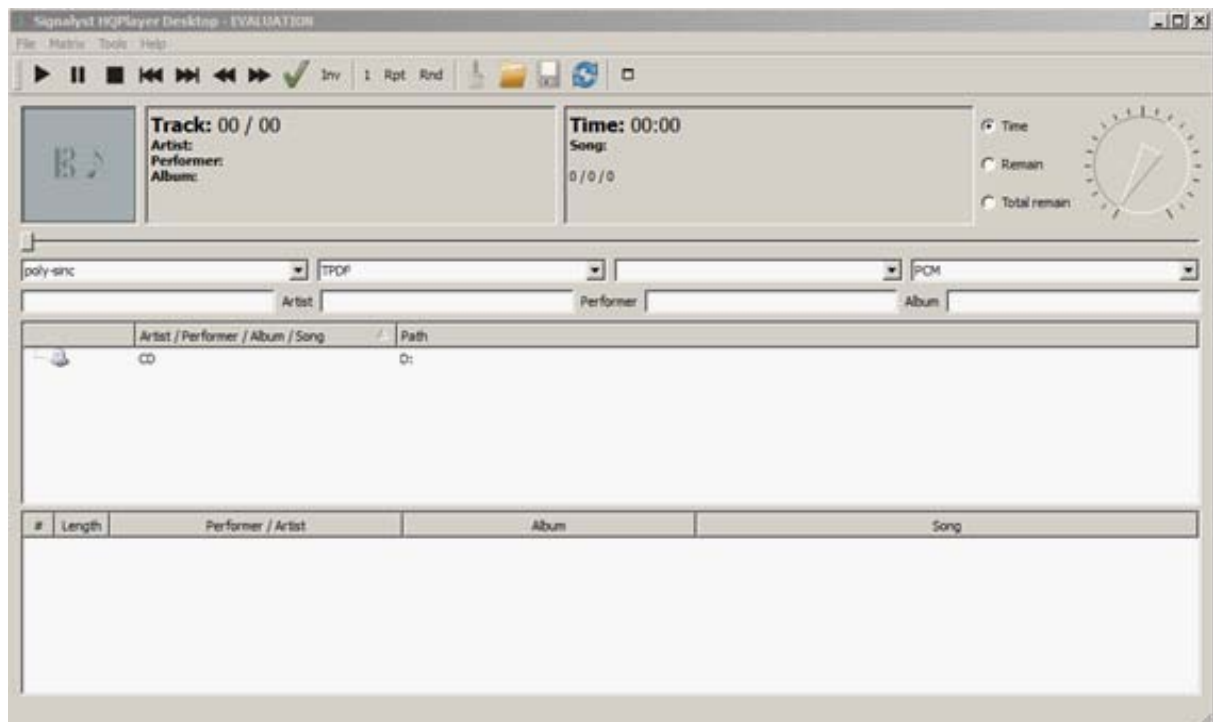


How To Use HQPlayer on Windows or Mac

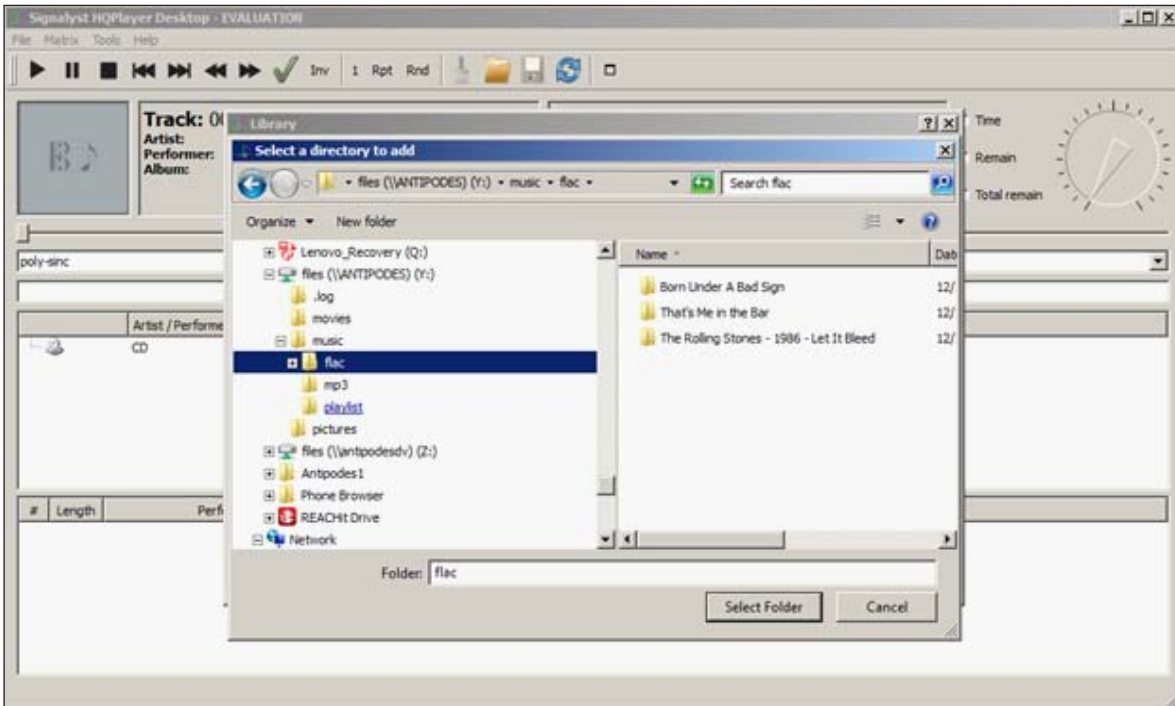
The music library that HQPlayer Desktop works with is a Windows or OS X folder. It is therefore necessary to map your Antipodes music library as a shared network drive, as shown, in order to play music files using HQPlayer.



When you start HQPlayer Desktop for the first time you will be presented with a blank screen.



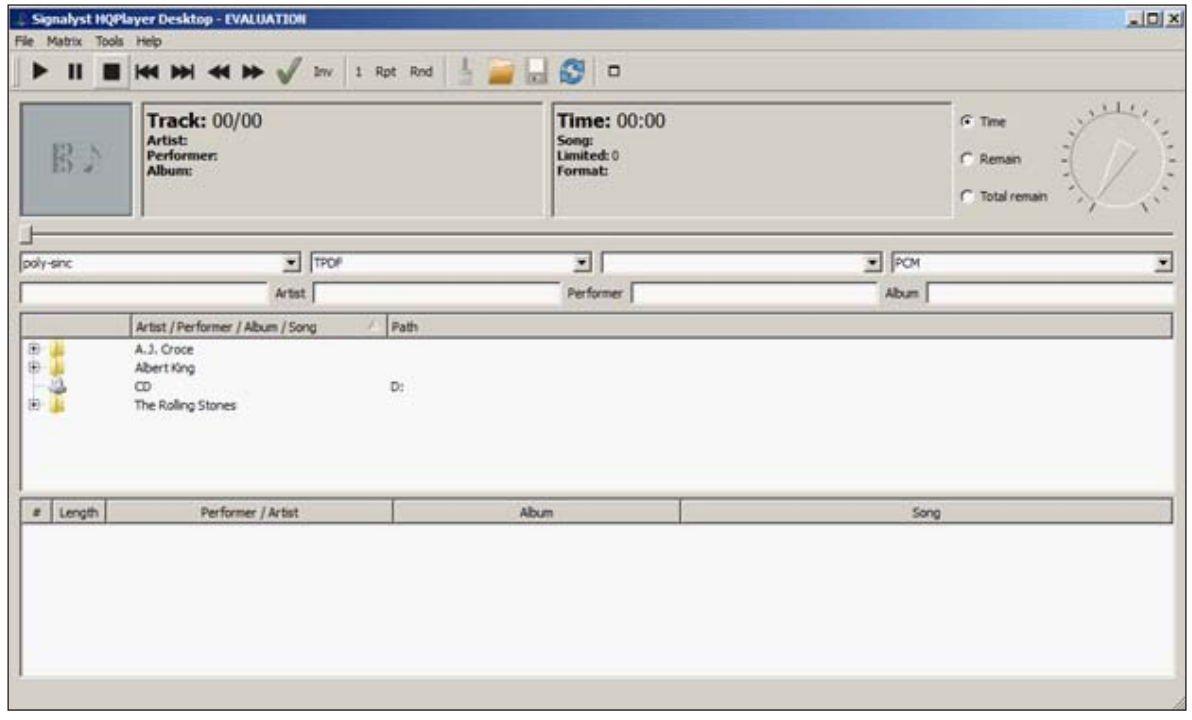
To start adding music files to HQPlayer click 'File/Library' and then 'Add' (for individual files) or 'Add Tree' (to add a folder).



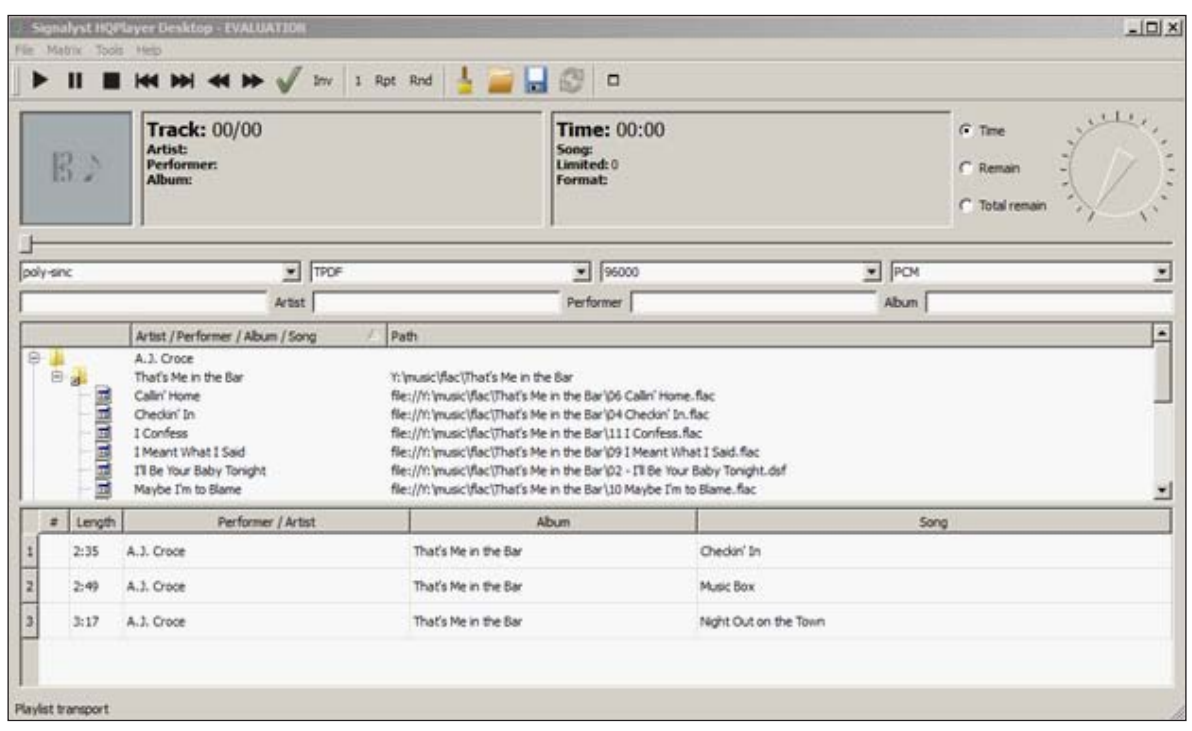
Select a folder, such as the 'flac' folder shown above, and then click 'OK'.




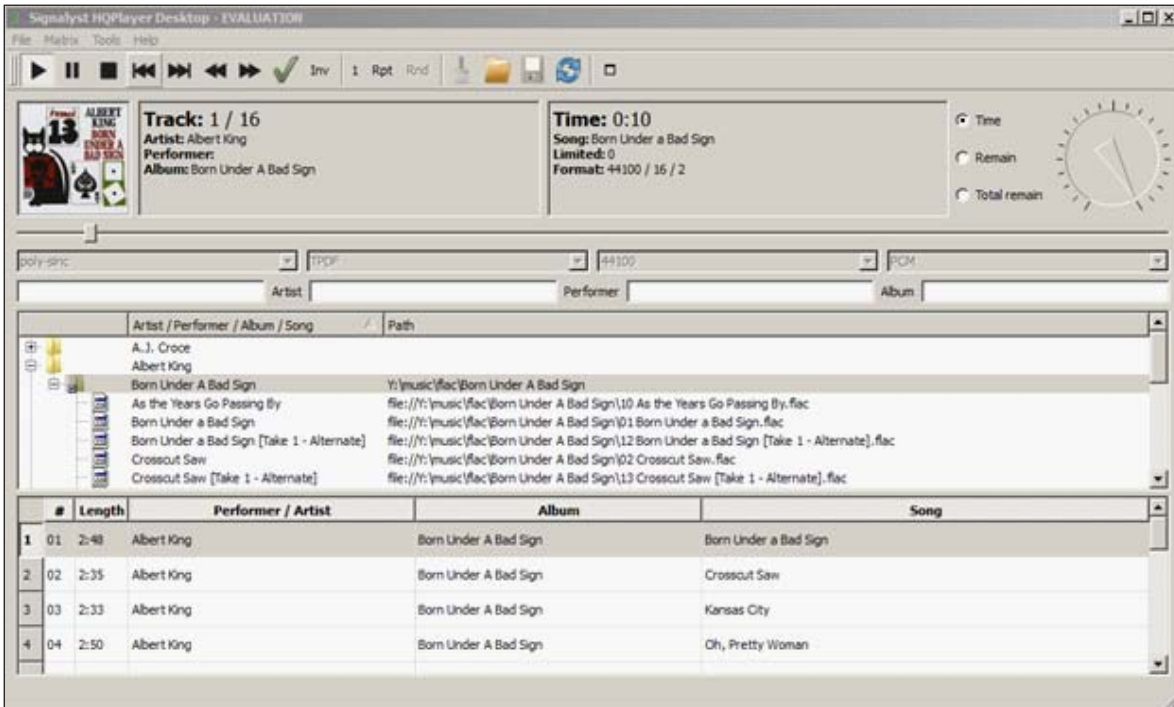
The contents of the selected folder, i.e. album folders, will be displayed in the middle (library) pane.




You can then drill down through the folder views, select albums and/or tracks and add them to the bottom (playlist) pane.



Then click the first, or any track, in the playlist, or  to start playing music.



There is also a full-screen mode selectable ( at the right hand end of the task bar).

